



Submittal Data Sheet
 1.25-Ton Wall mounted Indoor Unit
 FTXS15WVJU9

Model			FTXS15WVJU9	
			Cooling	Heating
Power Supply	Phase	1 ϕ		
	Hz, V	60 Hz, 208 - 230 V		
Rated Capacity			15 kBtu/h Class	
Front Panel Color			White	
Airflow Rates	H	cfm (m ³ /min)	568 (16.1)	593 (16.8)
	M		477 (13.5)	505 (14.3)
	L		385 (10.9)	417 (11.8)
	SL		360 (10.2)	371 (10.5)
Fan	Type	Cross Flow Fan		
	Motor Output	HP	0.06	
	Speed	Steps	5 Steps, Quiet, Auto	
Air Direction Control			Right, Left, Horizontal, Downward	
Air Filter			Removable, Washable	
Running Current (Rated)	A		0.31 - 0.29	0.31 - 0.29
Power Consumption (Rated)	W		38 - 38	38 - 38
Power Factor (Rated)	%		58.9 - 57.0	58.9 - 57.0
Temperature Control			Microcomputer Control	
Dimensions (H \times W \times D)	in. (mm)		13-3/8 \times 41-5/16 \times 9-3/4 (340 \times 1,050 \times 248)	
Packaged Dimensions (H \times W \times D)	in. (mm)		13 \times 45-11/16 \times 16-7/8 (331 \times 1,160 \times 429)	
Weight (Mass)	lbs (kg)		31 (14)	
Gross Weight (Gross Mass)	lbs (kg)		43 (19)	
Sound Pressure Level	H / M / L / SL	dB(A)	45 / 40 / 35 / 32	43 / 38 / 33 / 30
Sound Power Level	dB		61	59
Heat Insulation			Both Liquid and Gas Pipes	
Piping Connection	Liquid	in. (mm)	ϕ 1/4 (ϕ 6.4)	
	Gas	in. (mm)	ϕ 1/2 (ϕ 12.7)	
	Drain	in. (mm)	ϕ 5/8 (ϕ 16)	
Note			SL: The quiet fan level of the airflow rate setting	

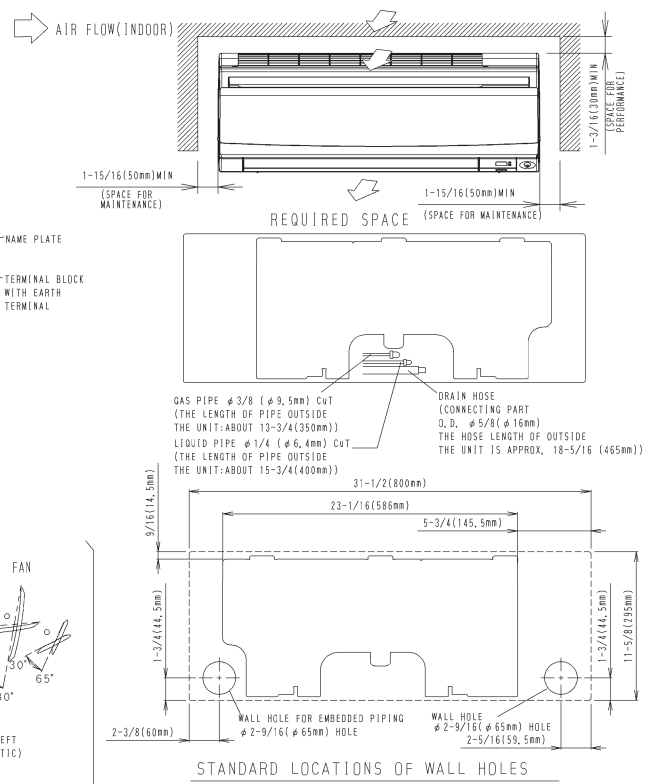
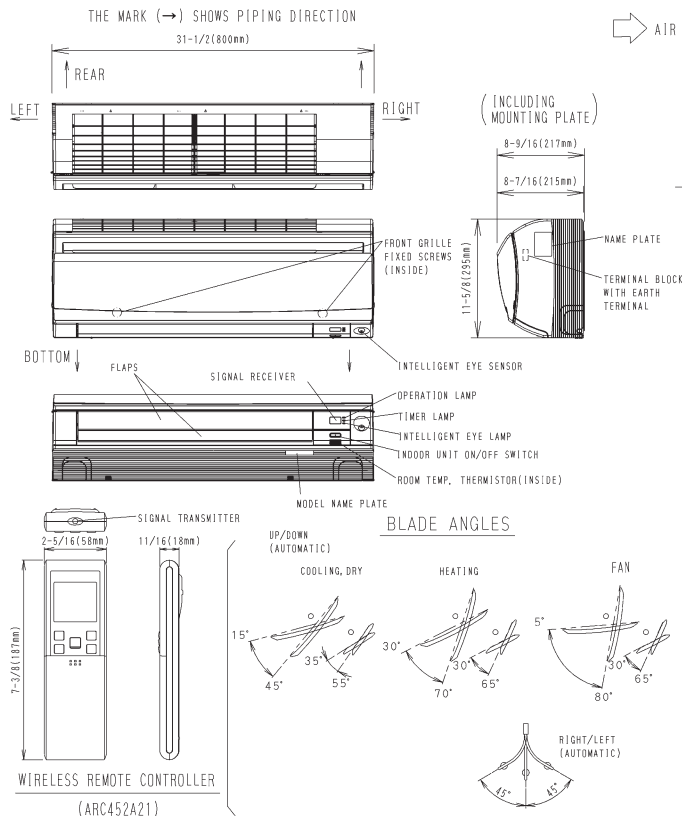
Daikin Comfort Technologies North America, Inc 19001 Kermier Rd Waller TX 77484
 Daikin City Generated Submittal Data www.daikincomfort.com or www.daikinac.com

(Daikin's products are subject to continuous improvements. Daikin reserves the right to modify product design, specifications, and information in this data sheet without notice and without incurring any obligations)

4. Dimensions

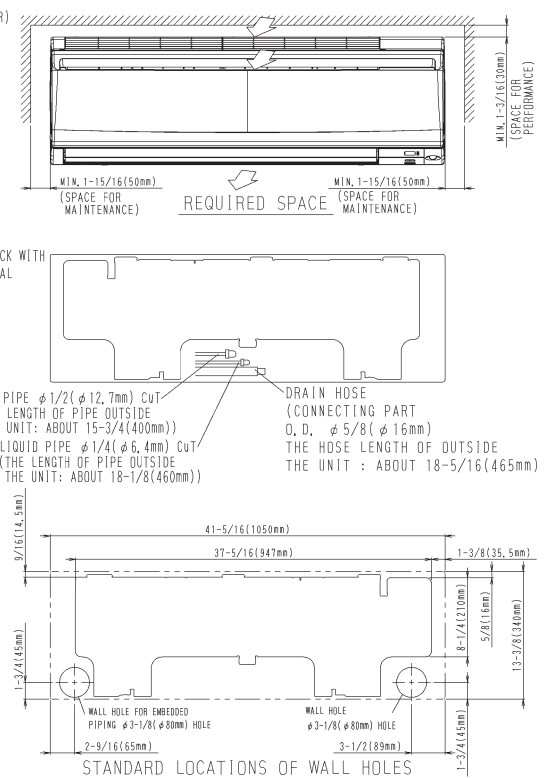
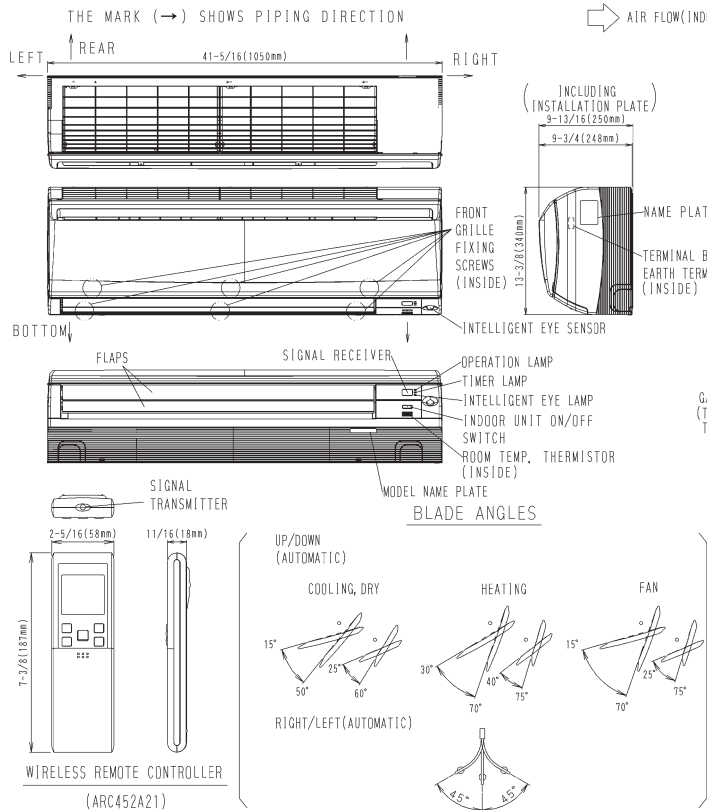
4.1 Indoor unit

CTXS07WVJU9, FTXS09/12WVJU9



3D074094B

FTXS15/18WVJU9



3D074024B