

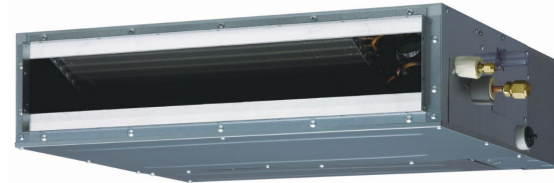
**Inverter Driven Heat Pump** **9,000 BTU Single Zone Slim Ducted System**

Job Name \_\_\_\_\_  
 Location \_\_\_\_\_  
 Engineer \_\_\_\_\_  
 Submitted To \_\_\_\_\_  
 Submitted By \_\_\_\_\_  
 Reference \_\_\_\_\_

Date \_\_\_\_\_  
 Approval \_\_\_\_\_  
 Construction \_\_\_\_\_  
 Unit No \_\_\_\_\_  
 Drawing No \_\_\_\_\_

**PRODUCT FEATURES**

- Auto Changeover
- 24 hr./Weekly Timer
- Built in condensate Pump
- Auto Restart
- Economy Mode
- Auto Fan Mode
- Daisy Chain Compatible



MODEL NUMBERS	
Indoor Unit	ADUH09LUAS1
Outdoor Unit	AOUH09LUAS1
System	09LUAS1D

EFFICIENCIES		
SEER	20	
EER	13.6	
HSPF	11.7	
COP	kW/kW	3.96
	Btu/hW	13.5

OUTDOOR TEMPERATURE OPERATION RANGE	
Cooling	°F(°C) 14 to 115 (-10 to 46)
Heating	-5 to 75 (-21 to 24)

CAPACITIES			
Cooling	Rated	BTU/hW	9,000
	Min.—Max.		3,100–11,000
Heating	Rated	BTU/hW	12,000
	Min.—Max.		3,100–16,000

LINESET REQUIREMENTS	
Connection Method	Flare
Liquid	in (mm) Ø1/4 (Ø6.35)
Gas	Ø3/8 (Ø9.52)
Pre-Charge Length	49 (15)
Minimum Length	ft (m) 16 (5)
Maximum Length	66 (20)
Max. Height Diff.	49 (15)

INDOOR DIMENSIONS & WEIGHT	
Net (H x W x D)	in 7-13/16 x 27-9/16 x 24-7/16
	mm (198 x 700 x 620)
Gross (H x W x D)	in 10-7/8 x 38-1/8 x 30-3/8
	mm (276 x 968 x 772)
Net Weight	37 (17)
Gross Weight	49 (22)

OUTDOOR DIMENSIONS & WEIGHT	
Net (H x W x D)	in 21-5/16 x 31-7/16 x 11-7/16
	mm (542 x 799 x 290)
Gross (H x W x D)	in 23-11/16 x 37 x 14-3/4
	mm (602 x 940 x 375)
Net Weight	70 (32)
Gross Weight	77 (35)

**Warranty Information**



7 Year Compressor, 5 Year Parts out-of-the-box Warranty



10 Year Compressor, 10 Year Parts Warranty when registered within 60 days of installation in a residence



12 Year Compressor, 12 Year Parts Warranty when registered within 60 days of installation in a residence, and installed by a Fujitsu Elite contractor

**ACCESSORIES**

UTY-TTRX	3rd Party Thermostat Converter
UTY-RNRUZ5	Wired Remote (backlite)
UTY-RSRY	Simple Remote
UTY-LBTUM	IR Receiver Kit W/Wireless Remote
UTY-XSZX	Remote Sensor
UTD-GXTA-W	Auto Louver Grill
UTY-XWZXZG	External Connect Kit
UTY-TFSXZ2	Wireless LAN Adaptor
UTY-XCSX	External Input/Output PCB



This system combination is Energy Star qualified



Indoor Unit ETL#: 3170288  
 Outdoor Unit ETL#: 91987

**Inverter Driven Heat Pump**

**9,000 BTU Single Zone Slim Ducted System**

**FAN DATA**

Indoor Unit Airflow Rate	Cooling	High	CFM (m3/h)	353 (600)
		Medium		324 (550)
		Low		294 (500)
		Quiet		265 (450)
	Heating	High		353 (600)
		Medium		324 (550)
		Low		294 (500)
		Quiet		265 (450)
Outdoor Unit Airflow Rate	Cooling		906 (1,540)	
	Heating		906 (1,540)	

**SOUND PRESSURE**

Indoor Unit	Cooling	High	dB (A)	28
		Medium		27
		Low		26
		Quiet		25
	Heating	High		28
		Medium		26
		Low		25
		Quiet		24
Outdoor Unit	Cooling		44	
	Heating		48	

**REFRIGERANT**

Type	R410A		
Charge	lb oz	2 lb 3 oz	
	kg	1,000	
Oil Type	RB68		

**ELECTRICAL SPECIFICATIONS**

Voltage/Frequency/Phase			208/230V~60HZ	
Voltage Range			187-253V~60HZ	
Current	Cooling	Rated	A	3.3
	Heating	Rated		4.5
Maximum Operating Current		Cooling		6.8
		Heating		9.3
Starting Current				4.6
MCA				9.3
Maximum Circuit Breaker				15
Input Power	Cooling	Rated	kW	0.66
		Max		1.05
	Heating	Rated		0.89
Max		1.89		
Power Factor	Cooling	%		87
	Heating			86

**OTHER**

Moisture Removal	pints/h (L/h)	1.5 (0.7)	
Energy Star		Yes	
Drain hose	Material	Hard PVC	
Size	in (mm)	Ø 3/4 (Ø 20.7) (I.D.) Ø 1-1/16 (Ø 26.6) (O.D.)	
IDU Operation Range	Cooling	°F (°C)	64 to 90 (18 to 32)
		%RH	80 or less
Heating	°F (°C)	60 to 88 (16 to 30)	
Static Pressure in W.C.		0 ~ 0.36	

**Auto Louver Grill Data (SOLD SEPARATELY):**



Model Name	<b>UTD-GXSA-W   UTD-GXTA-W</b>		
Power Supply	Connecting with Control box of indoor unit		
Attachment of Auto Louver	Louver attached by screws to the flange of rectangular duct		
Extension Square Duct Limit	In. (mm)	39-3/8 (1.0) Max Duct Length between indoor unit and Grill	
Net Dimension (H x W x D)	In.	7-1/16 x 26-7/8 x (3-15/16+3/8)	
	(mm)	(180 x 683 x (84+9))	
Weight	Net	lbs.	5.6 (2.5)
	Gross	(kg)	7.8 (3.5)
Color	White		
Louver Motor	Stepping Motor		
Material	Flame Retardant ABS		
Accessories	Attachement Frame		
Operation Range	Cooling	°F (°C)	64 to 90 (18 to 32)
		% RH	80% or less
	Heating	°F (°C)	60 to 88 (16 to 30)

The Fujitsu logo is a worldwide trademark of Fujitsu General Limited. The Halcyon logo and name is a worldwide trademark of Fujitsu General Limited and is a registered trademark in Japan, the USA and other countries or areas. Copyright 2018 Fujitsu General America, Inc. Fujitsu's products are subject to continuous improvements. Fujitsu reserves the right to modify product design, specifications and information in this brochure without notice and without incurring any obligations.

Note: Specifications are based on the following conditions:  
 Cooling: Indoor temperature of 80°F (26.7°C) DB/67°F (19.4°C) WB, and outdoor temperature of 95°F (35°C) DB/75°F (23.9°C) WB. Heating: Indoor temperature of 70°F (21.1°C) DB/60°F (15.6°C) WB, and outdoor temperature of 47°F (8.3°C) DB/43°F (6.1°C) WB. Pipe length: 25ft. (7.5m), Height difference: 0ft. (0m) (Outdoor unit – indoor unit).

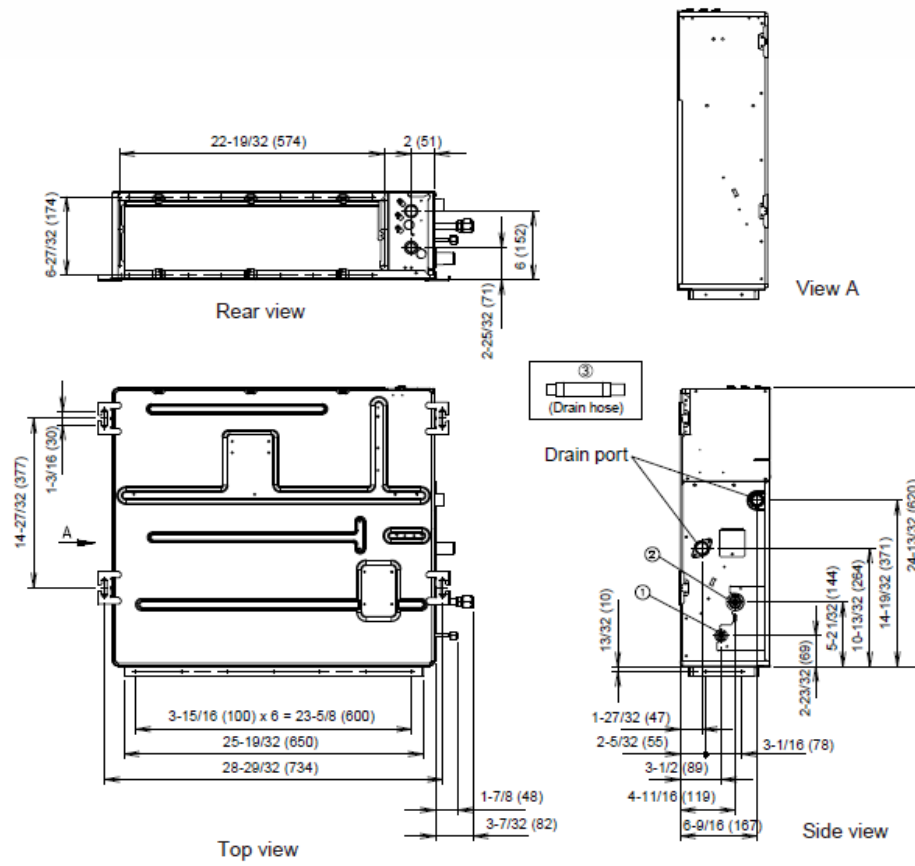
Inverter Driven Heat Pump

9,000 BTU Single Zone Slim Ducted System

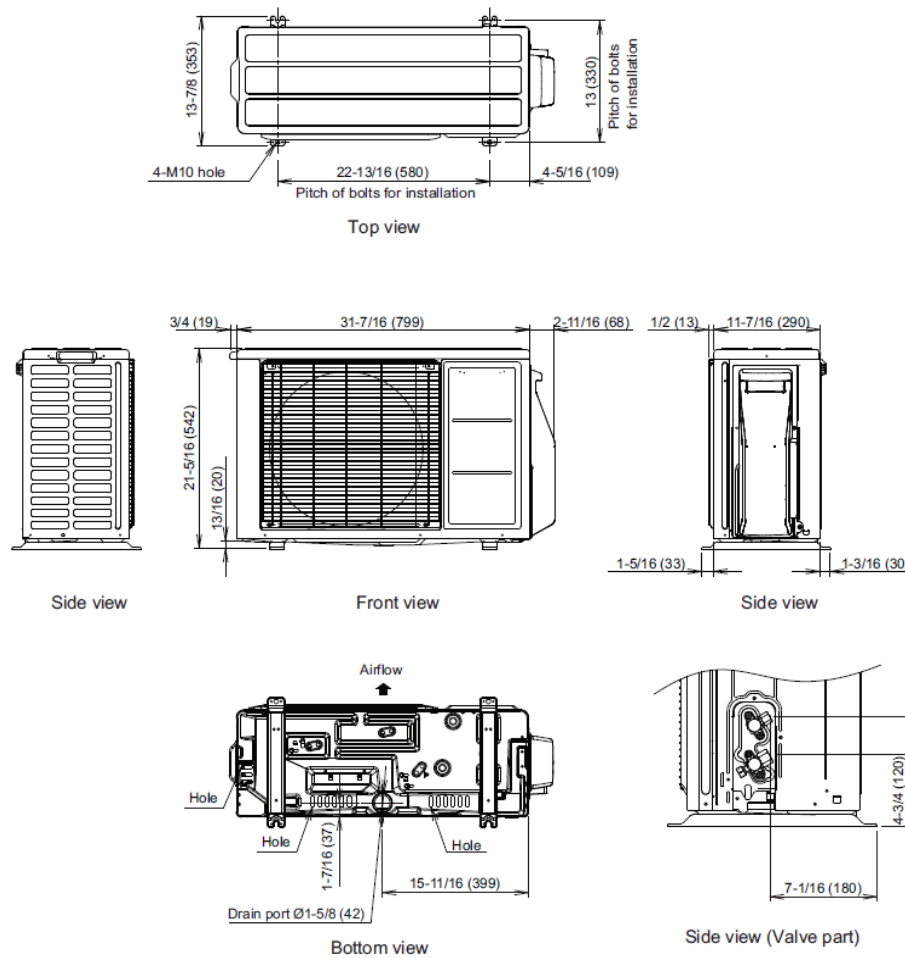
DIMENSIONS

Units: In. (mm)

Unit : in. (mm)



Unit: in (mm)



The Fujitsu logo is a worldwide trademark of Fujitsu General Limited. The Halcyon logo and name is a worldwide trademark of Fujitsu General Limited and is a registered trademark in Japan, the USA and other countries or areas. Copyright 2018 Fujitsu General America, Inc. Fujitsu's products are subject to continuous improvements. Fujitsu reserves the right to modify product design, specifications and information in this brochure without notice and without incurring any obligations.

Note: Specifications are based on the following conditions:  
 Cooling: Indoor temperature of 80°F (26.7°C) DB/67°F (19.4°C) WB, and outdoor temperature of 95°F (35°C) DB/75°F (23.9°C) WB. Heating: Indoor temperature of 70°F (21.1°C) DB/60°F (15.6°C) WB, and outdoor temperature of 47°F (8.3°C) DB/43°F (6.1°C) WB. Pipe length: 25ft. (7.5m), Height difference: 0ft. (0m) (Outdoor unit – indoor unit).