



STEALTH

MINI SPLITS & HEATPUMPS

WIFI APP CONFIGURATION

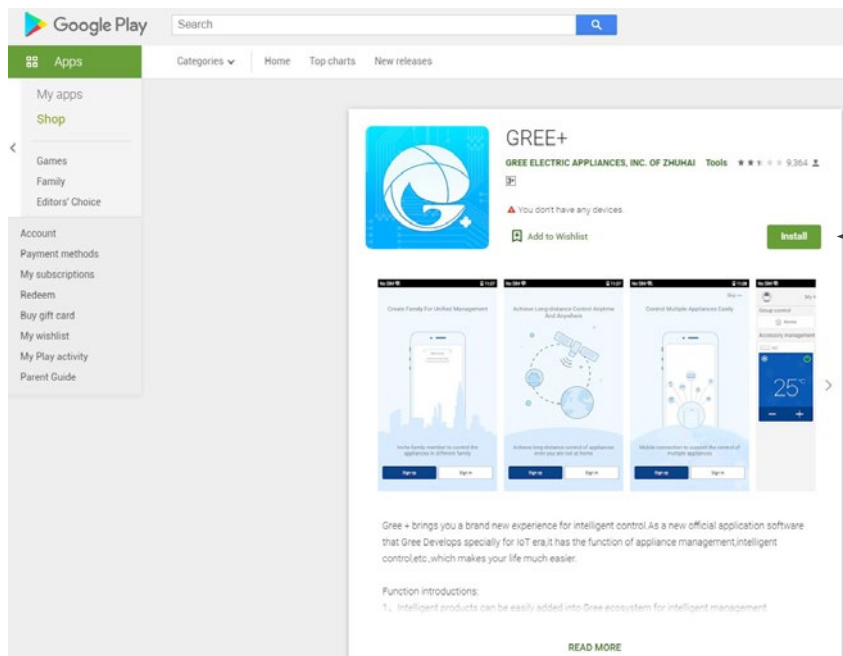
GREE+ APP CONFIGURATION FOR STEALTH COMFORT SYSTEMS



DOWNLOAD APP FROM PLAYSTORE OR APPSTORE

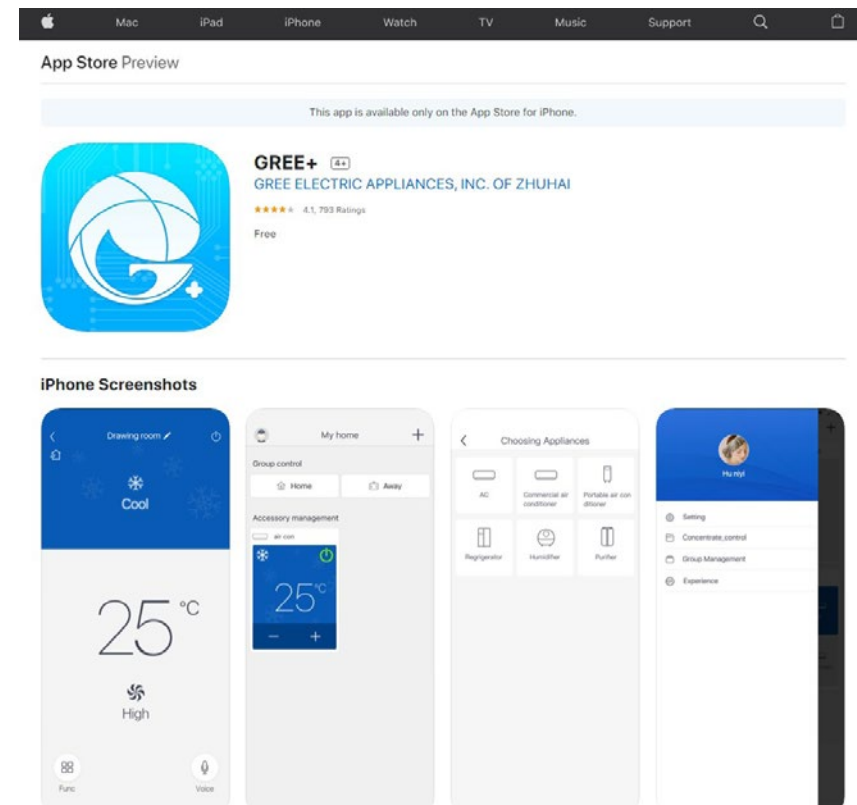
PLAYSTORE

<https://play.google.com/store/apps/details?id=com.gree.greeplus>



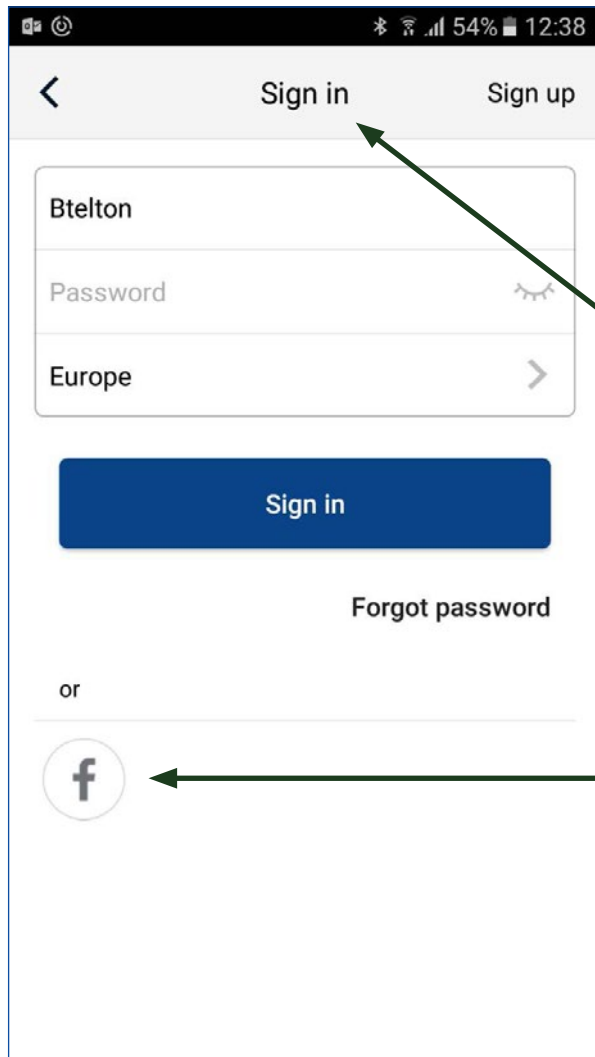
APPSTORE

<https://itunes.apple.com/us/app/gree/id1167857672?mt=8>



Install

SIGN IN / SIGN UP



A mobile application interface for signing in or signing up. The screen has a dark header bar with a back arrow, a "Sign in" button, and a "Sign up" button. Below the header, there are three input fields: "Btelton" (username/email), "Password" (with a toggle for visibility), and "Europe" (region). A blue "Sign in" button is positioned below the input fields. Below the button is a link for "Forgot password". A horizontal line with the word "or" separates the sign-in section from the sign-up section. The sign-up section features a Facebook logo icon.

Sign up if New User

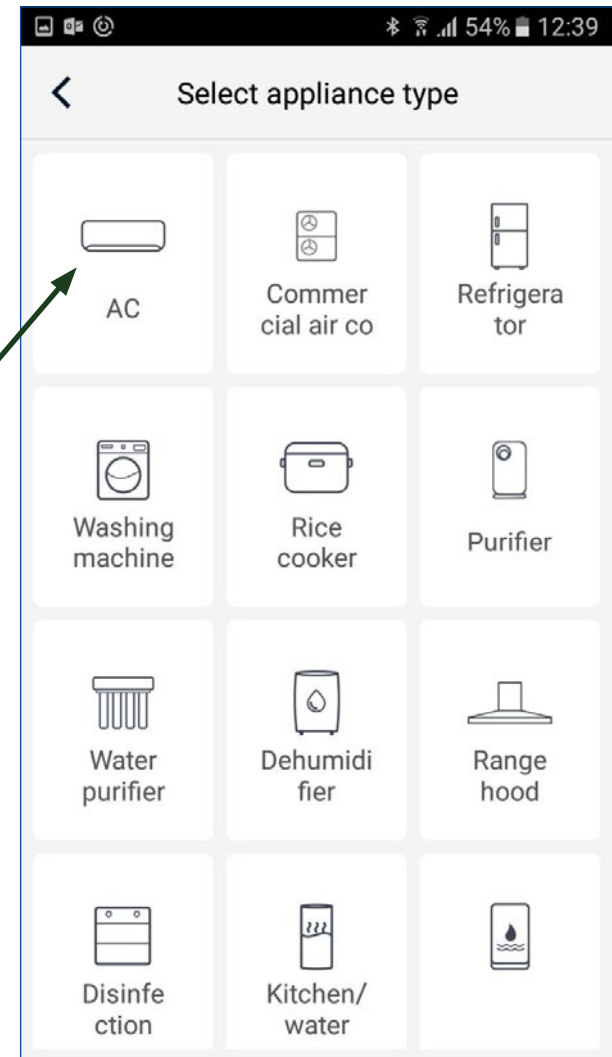
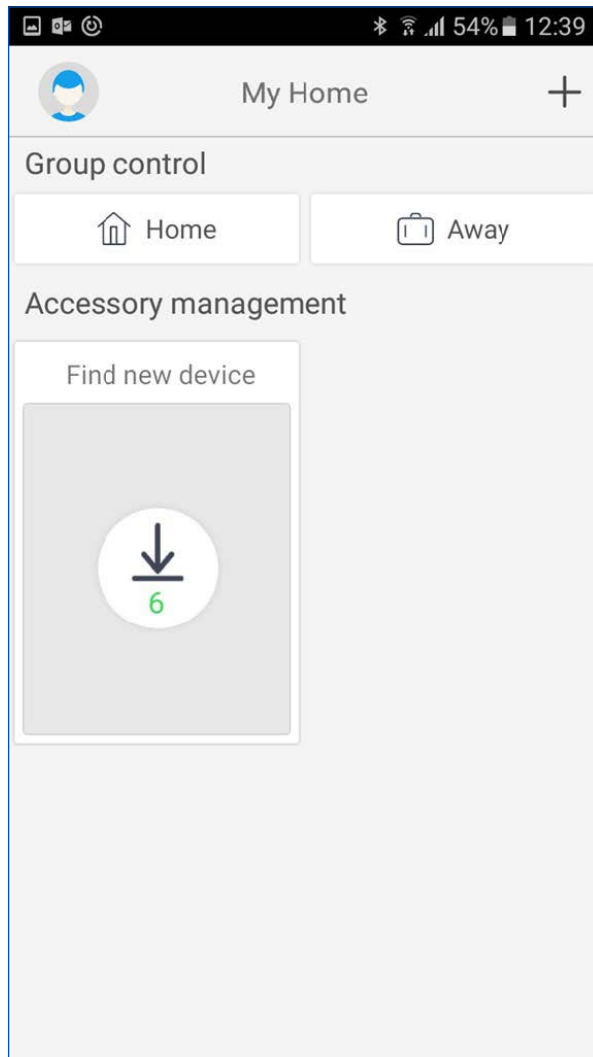
OR

Sign in with Username/Email & Password if
already registered as User

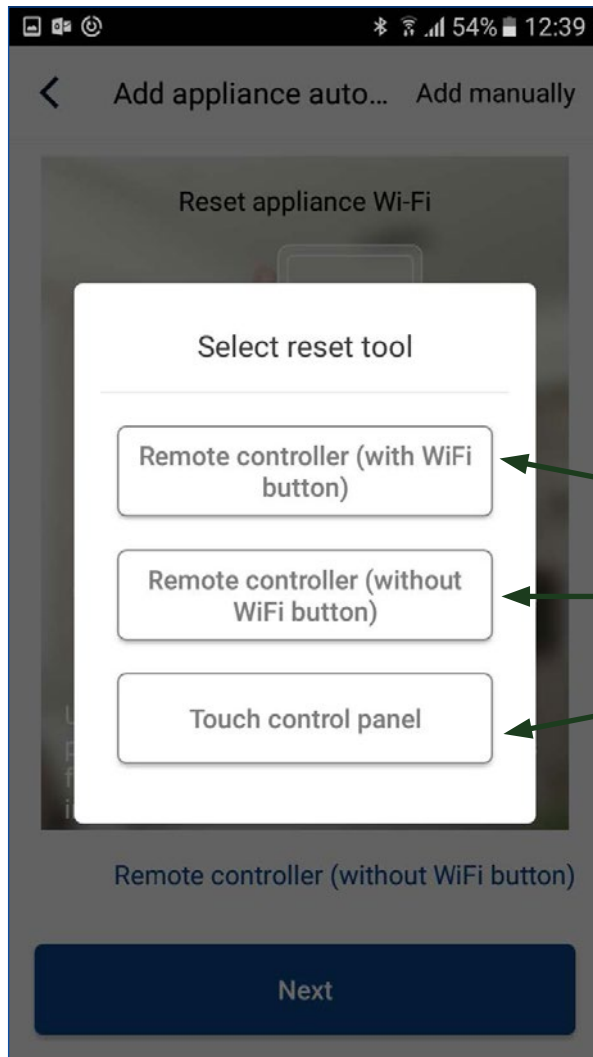
OR

Sign in with Facebook Account

ADD AC

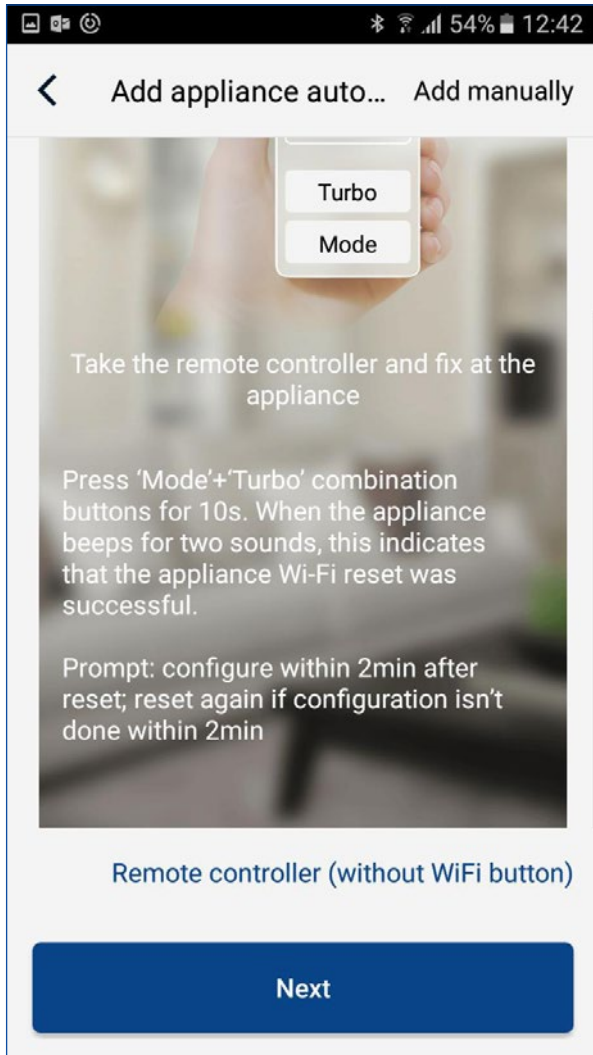


RESET REMOTE CONTROLLER



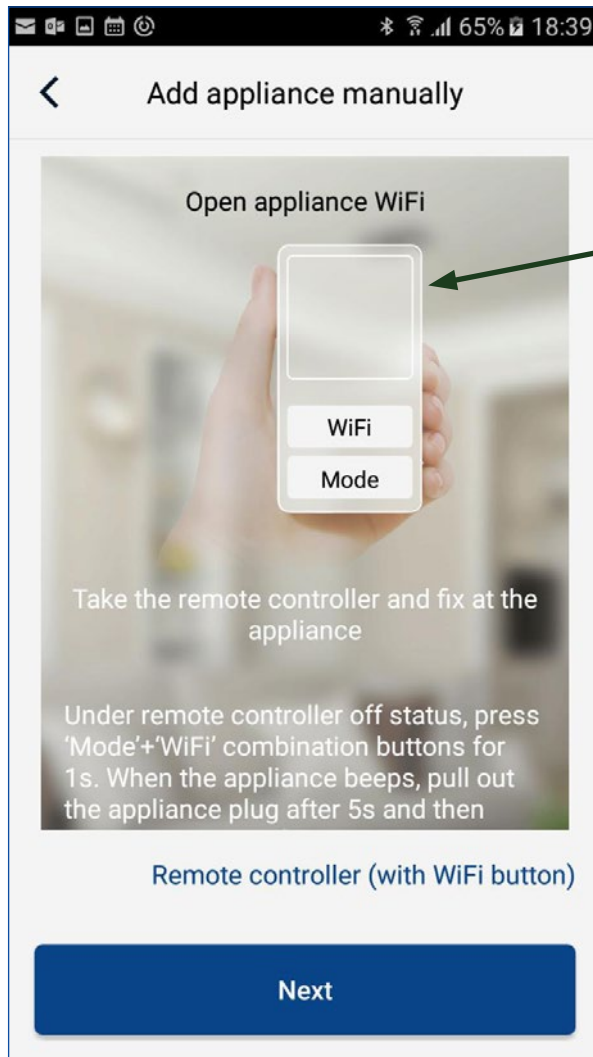
Click which type of Remote you have
& click on the Tab accordingly

ADD APPLIANCE MANUALLY



Click on 'Add manually'

ADD APPLIANCE MANUALLY



Please put A/C on Standby Mode (OFF)

1

Press
Wifi & Mode button for 1 sec
Simultaneously

OR

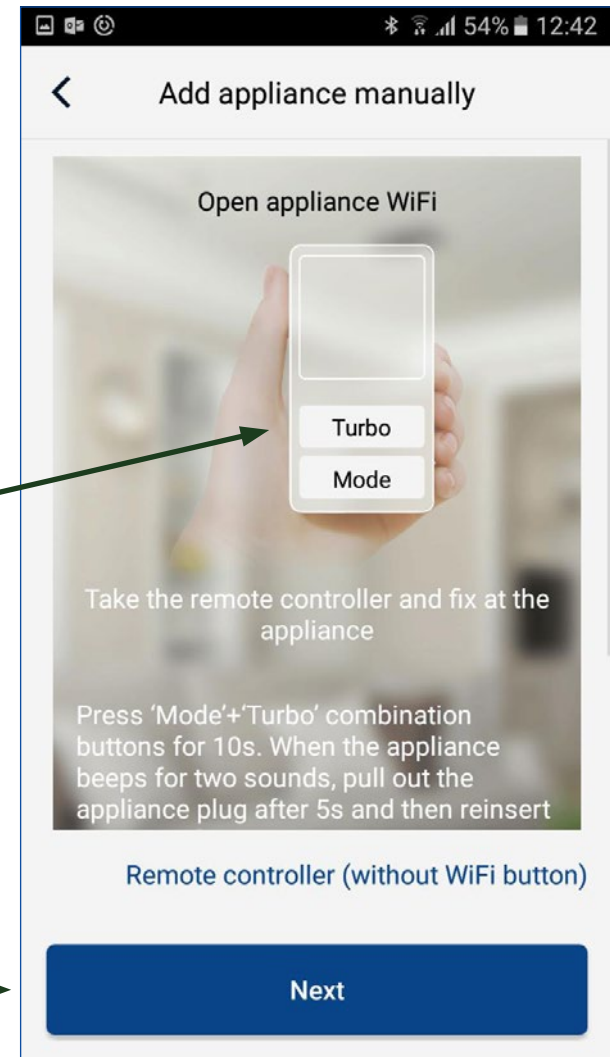
Press
Turbo and Mode buttons for 10 sec
Simultaneously

2

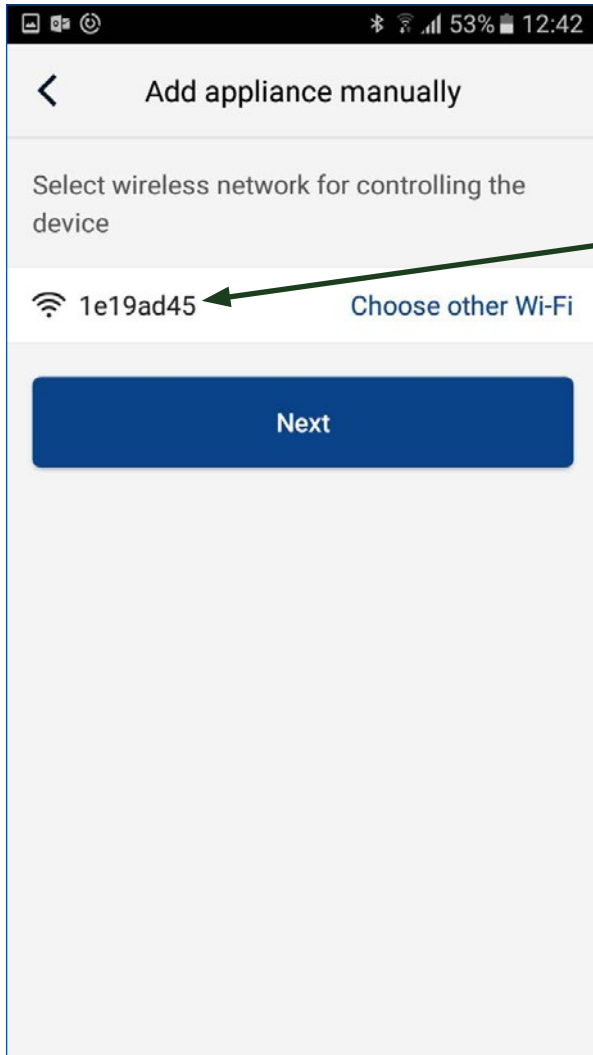
After 5 sec turn Off from power
supply (double pole switch)
& Turn On from after 3 sec

3

Click Next



ADD APPLIANCE MANUALLY



For Android Devices
(find iOS steps in next pages)

**Wifi MAC address will appear after few sec
from Reset of Power Supply (Please wait until
it shows)**

Click Next

ADD APPLIANCE MANUALLY

← Add appliance manually

Please select your home wireless router(5GHz Wi-Fi is not supported)

📶 BTMain [Choose other Wi-Fi](#)

🔒 🌙

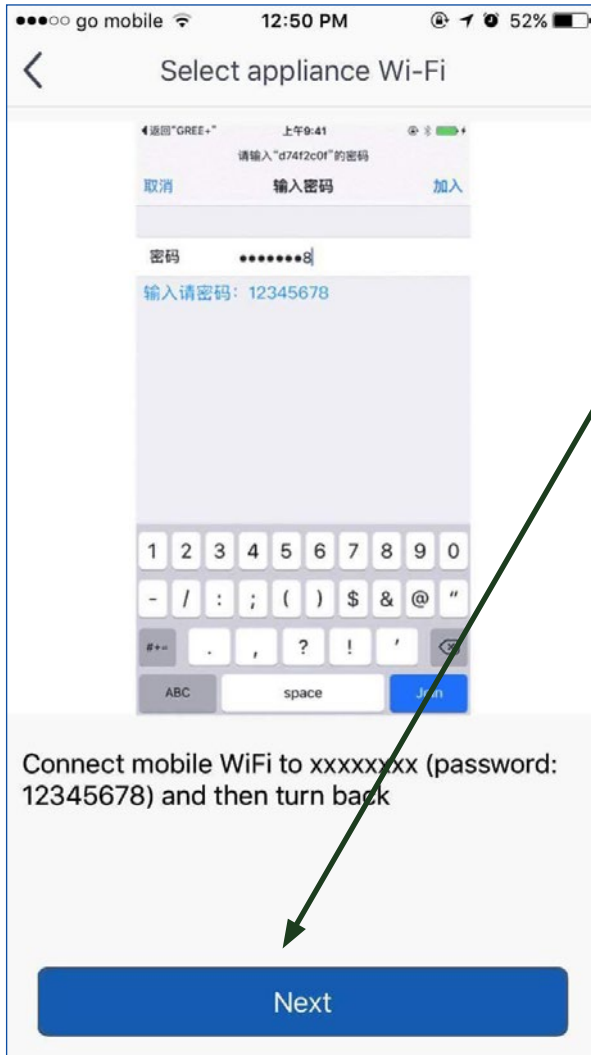
☒ Memorize the password

Submit

Choose Home Wifi or other Wifi Networks and Input Password
Note: Make sure you stay connected to the same Wifi Network until configuration is complete

Click Next

ADD APPLIANCE MANUALLY



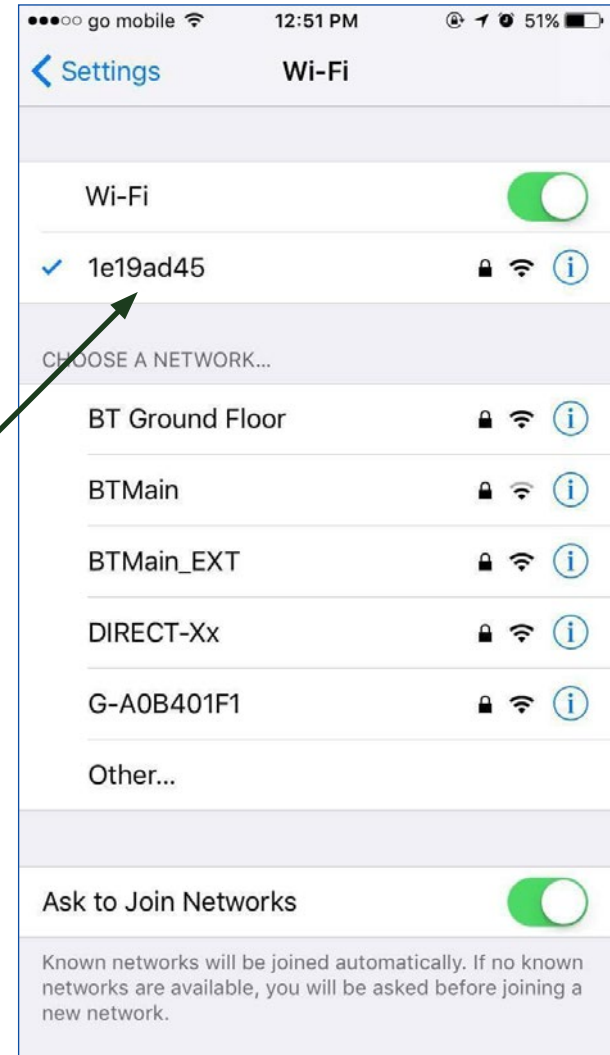
For iOS Devices

1

Click Next

2

Click on the Wifi Module
MAC Address of Appliance
i.e. 1e19ad45
And input password default
12345678



ADD APPLIANCE MANUALLY

Return to "GREE+" to continue setting

[Forget This Network](#)

IP ADDRESS

DHCP BootP Static

IP Address 192.168.1.2

Subnet Mask 255.255.255.0

Router 192.168.1.1

DNS 192.168.1.1

Search Domains 3G

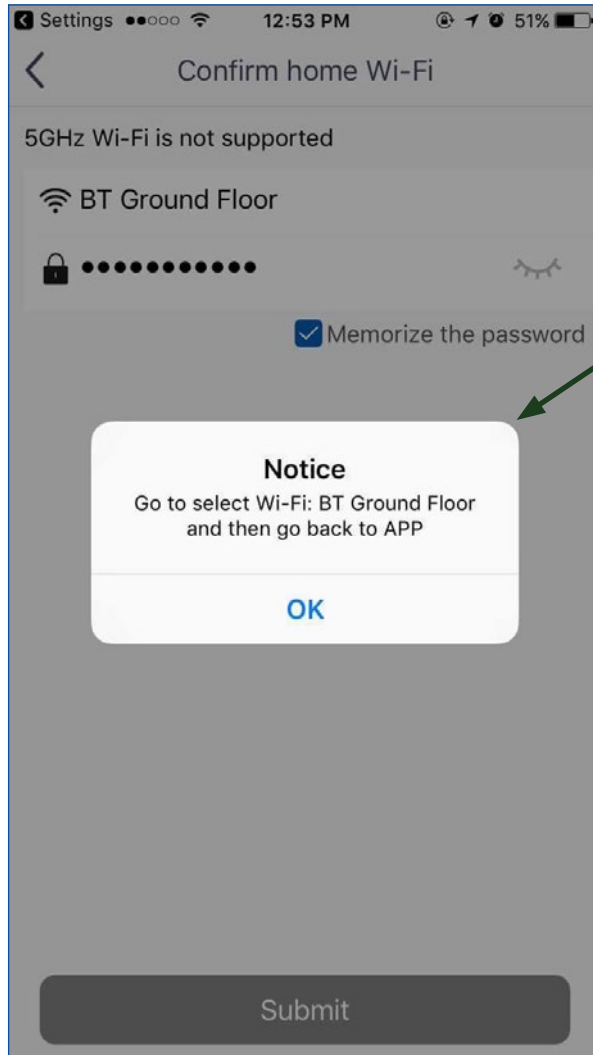
Client ID

[Renew Lease](#)

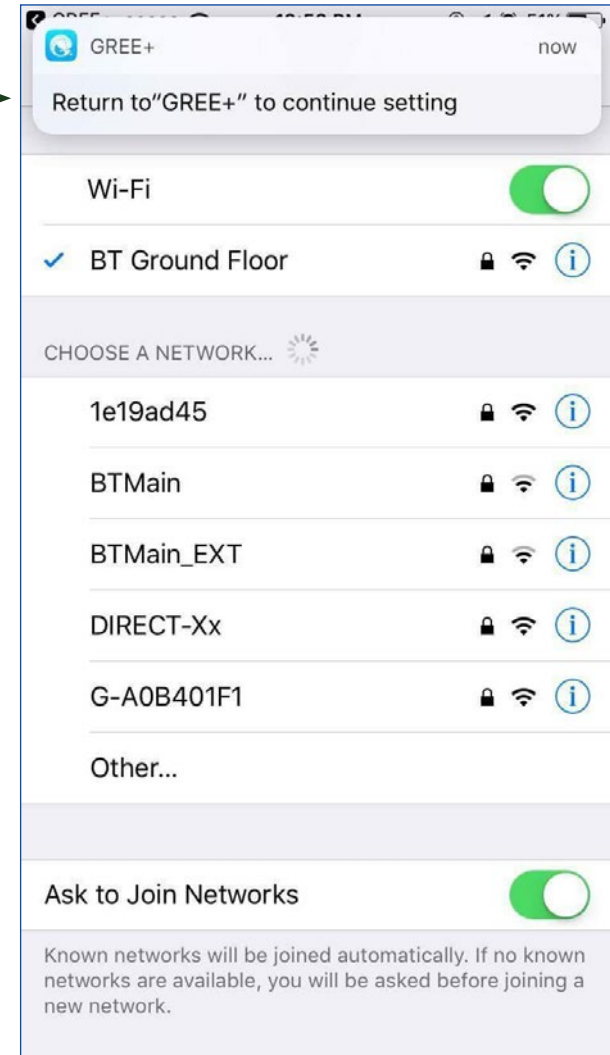
HTTP PROXY

When window pops up please click this tab to
Return to App configuration

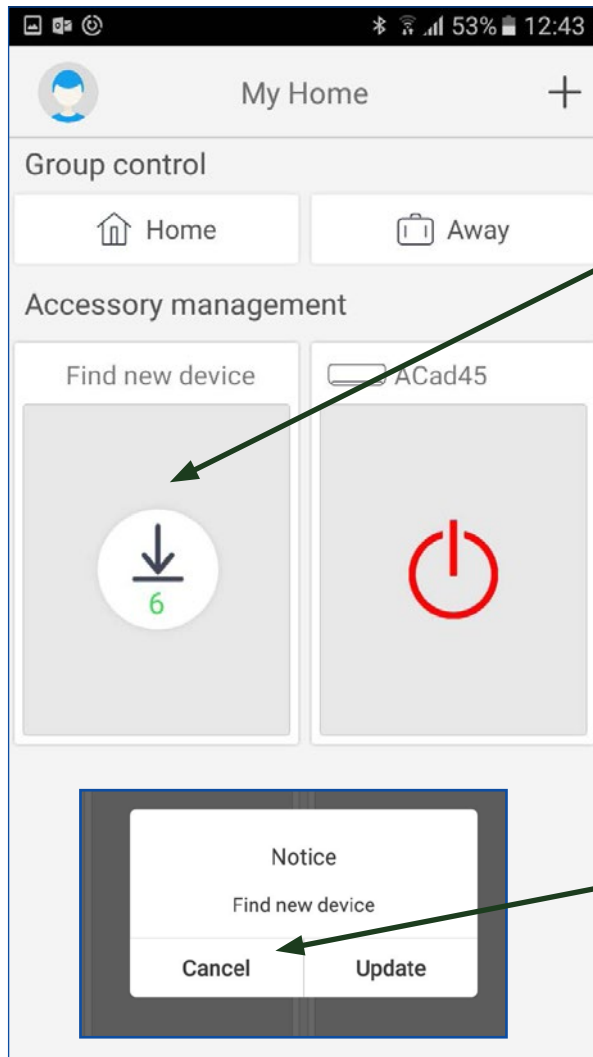
ADD APPLIANCE MANUALLY



Next Step is to Select Home Wifi or any Network Connection. Input Password and return to App GREE+



ADD APPLIANCE MANUALLY



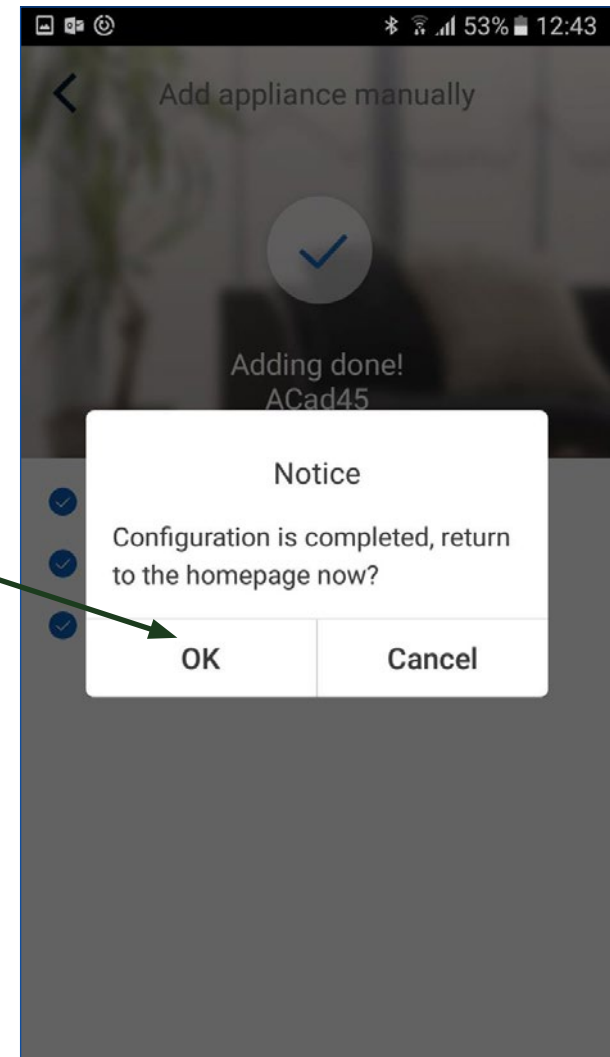
1

App will search for Appliance

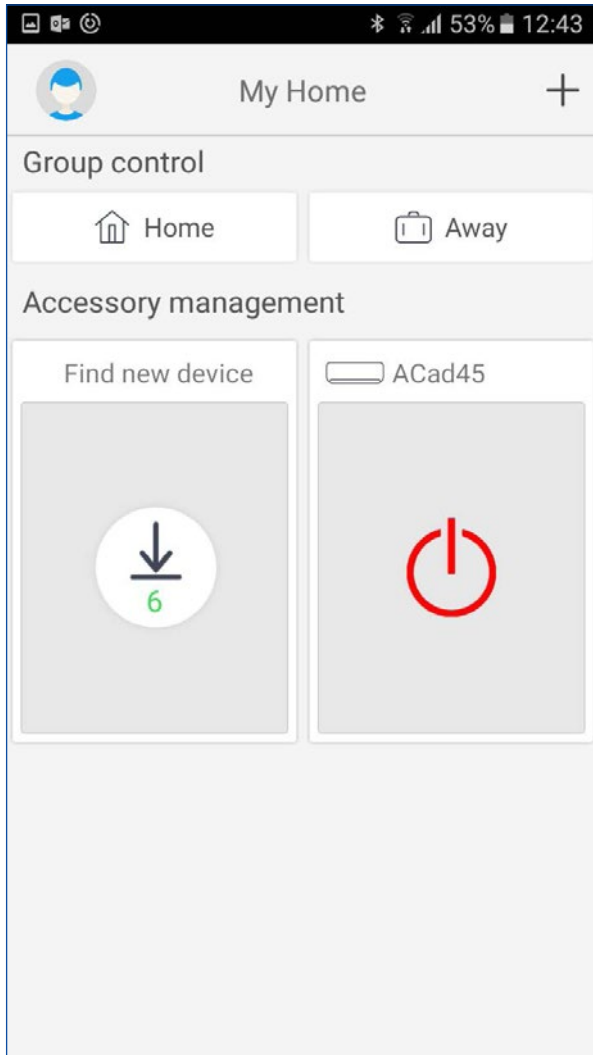
2

Click OK to start App

If window pops up click on Cancel



ADD APPLIANCE MANUALLY



**You can now easily control
Settings of A/C with GREE+ App
while Indoors or Outdoors**

**Note: To access appliance settings
from Outdoors, please make sure to
connect to a reliable Wifi Network or
3G/4G Network & Sign In with User
Name & Password in Gree Cloud**

