

# ACiQ™

MINI SPLITS & HEAT PUMPS

## WIFI APP CONFIGURATION

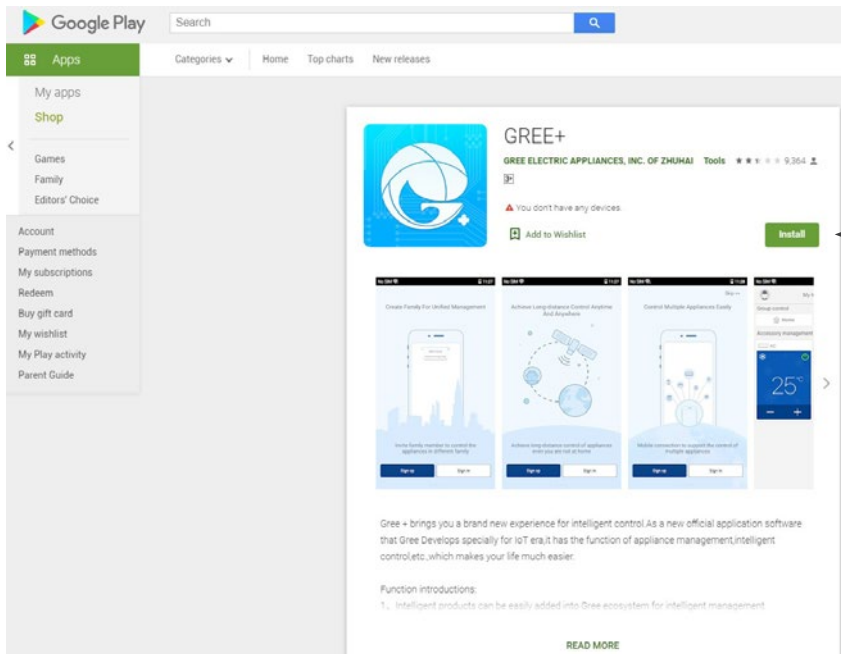
### GREE+ APP CONFIGURATION FOR ACIQ SYSTEMS



# DOWNLOAD APP FROM PLAYSTORE OR APPSTORE

## PLAYSTORE

<https://play.google.com/store/apps/details?id=com.gree.greeplus>

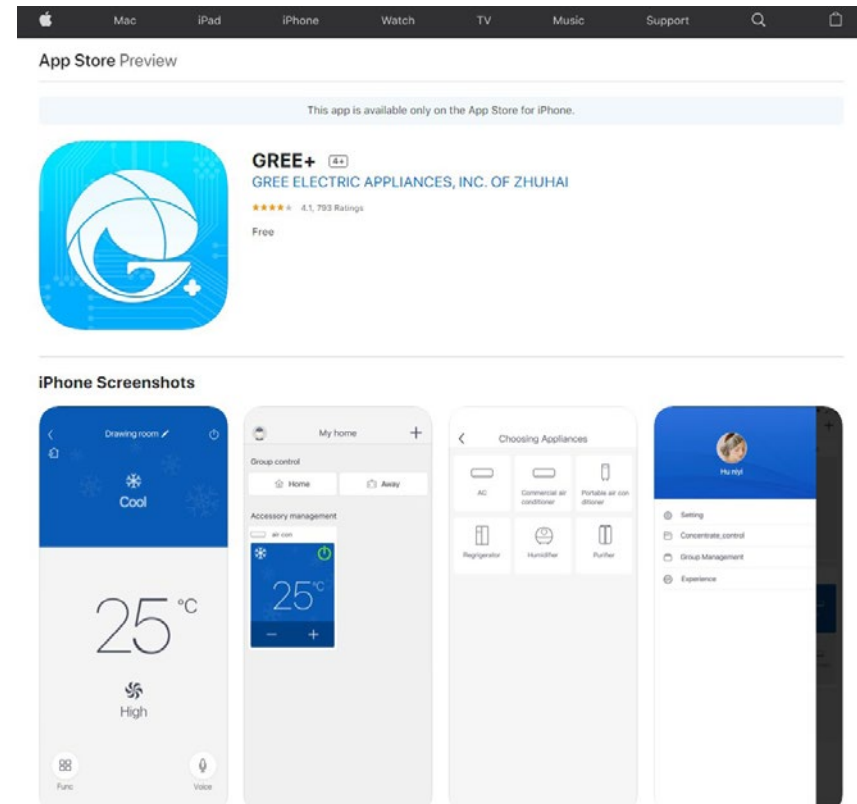


Install

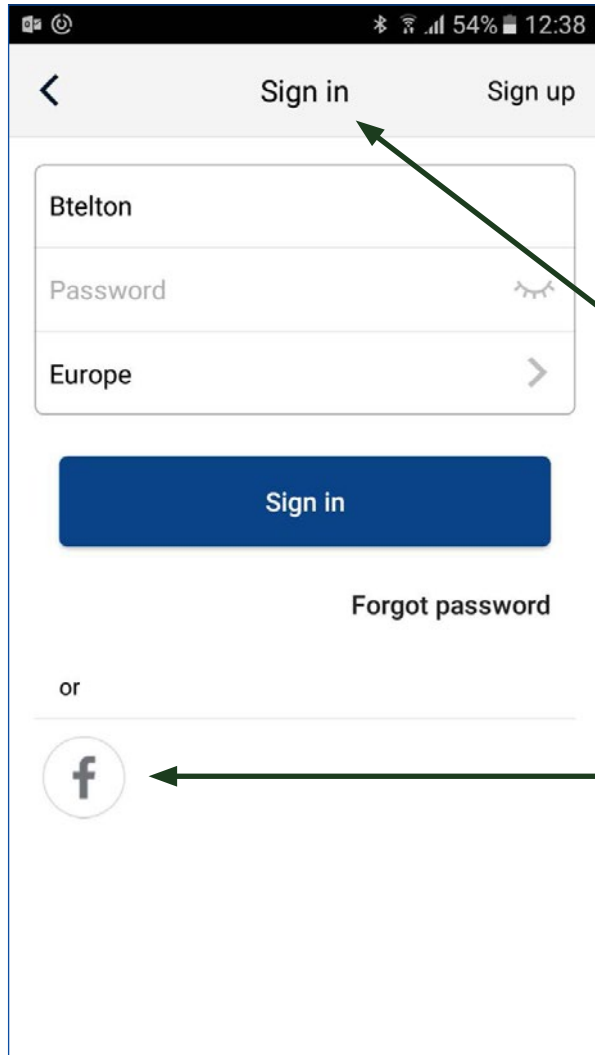


## APPSTORE

<https://itunes.apple.com/us/app/gree/id1167857672?mt=8>



# SIGN IN / SIGN UP



Sign up if New User

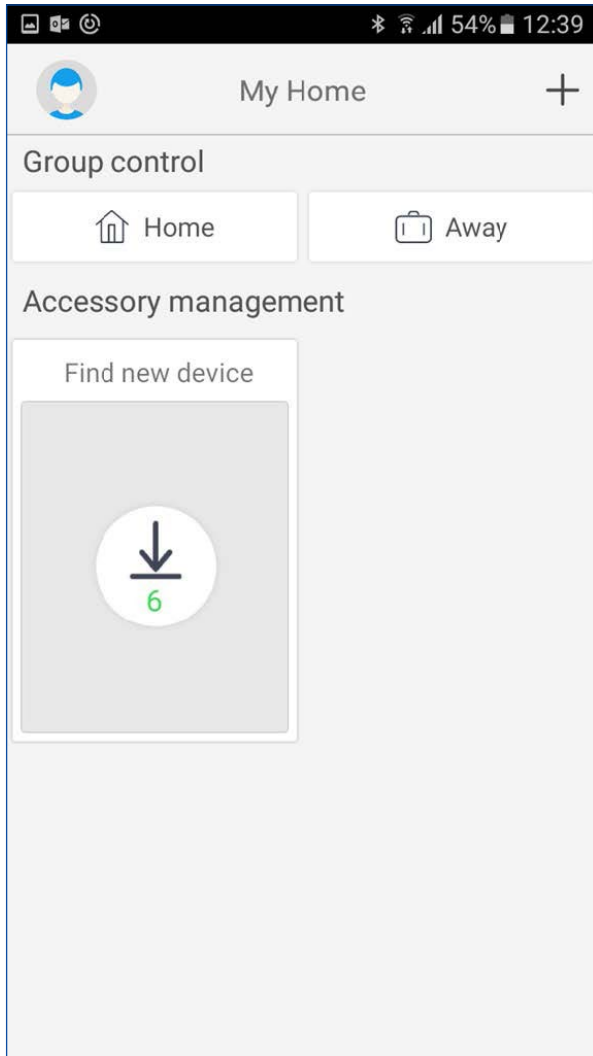
OR

Sign in with Username/Email & Password if already registered as User

OR

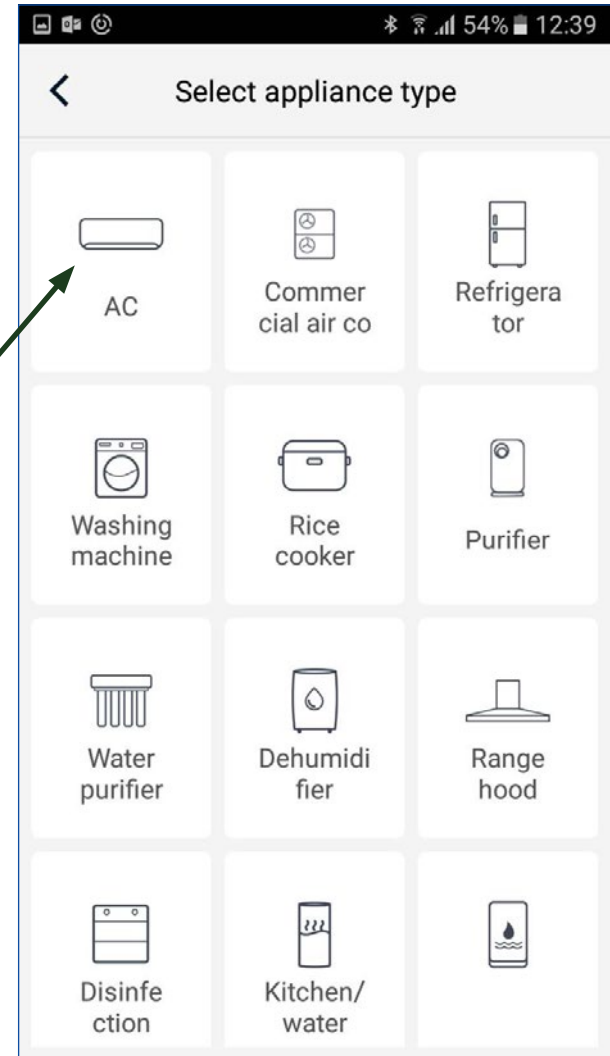
Sign in with Facebook Account

# ADD AC

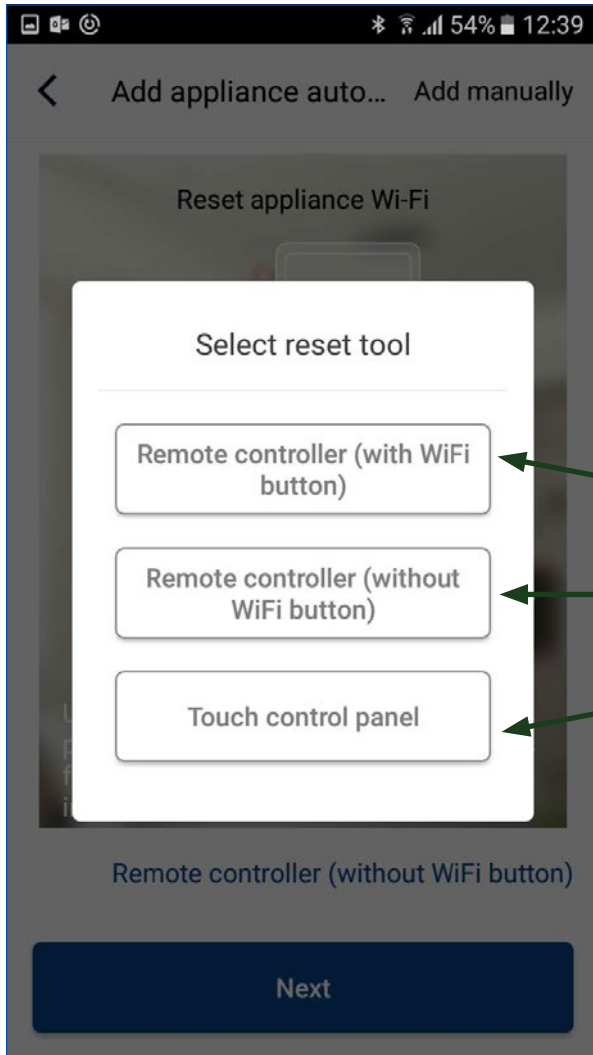


1  
Click on +

2  
Click to add AC

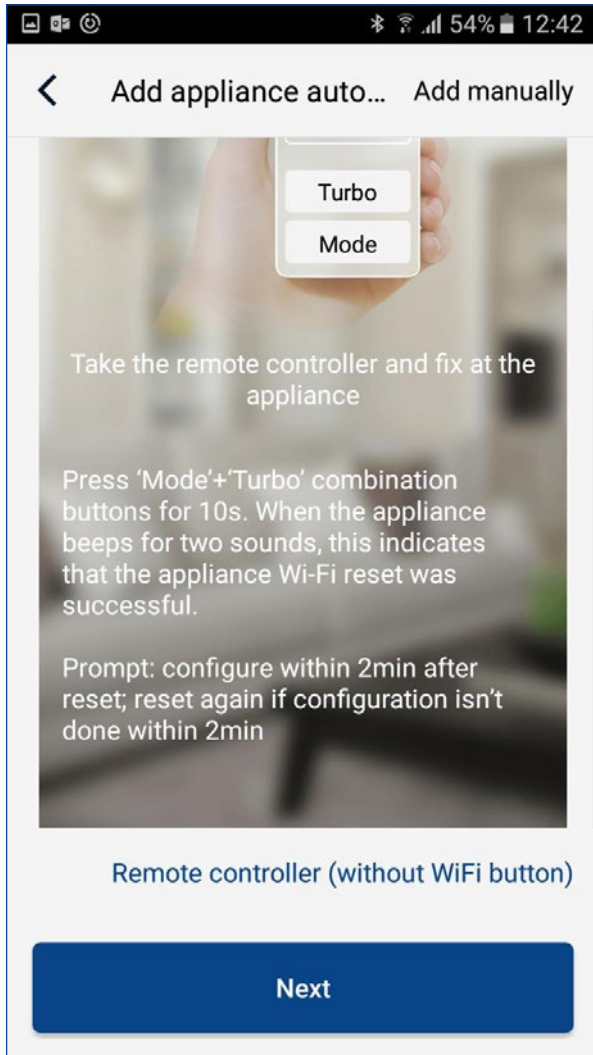


# RESET REMOTE CONTROLLER



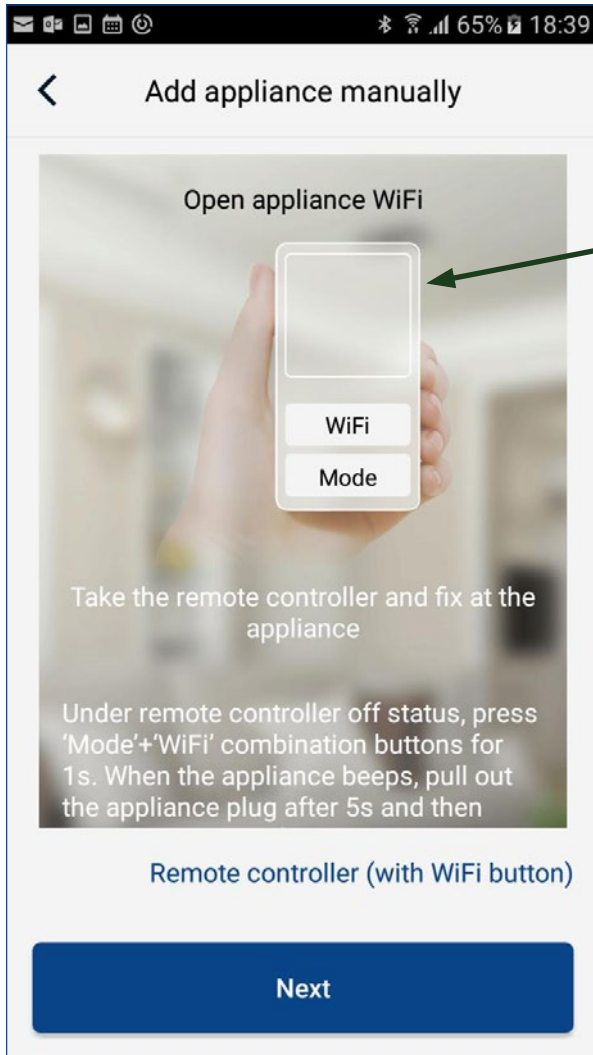
Click which type of Remote you have & click on the Tab accordingly

# ADD APPLIANCE MANUALLY



← Click on 'Add manually'

# ADD APPLIANCE MANUALLY



Please put A/C on Standby Mode (OFF)

1

Press  
Wifi & Mode button for 1 sec  
Simultaneously

OR

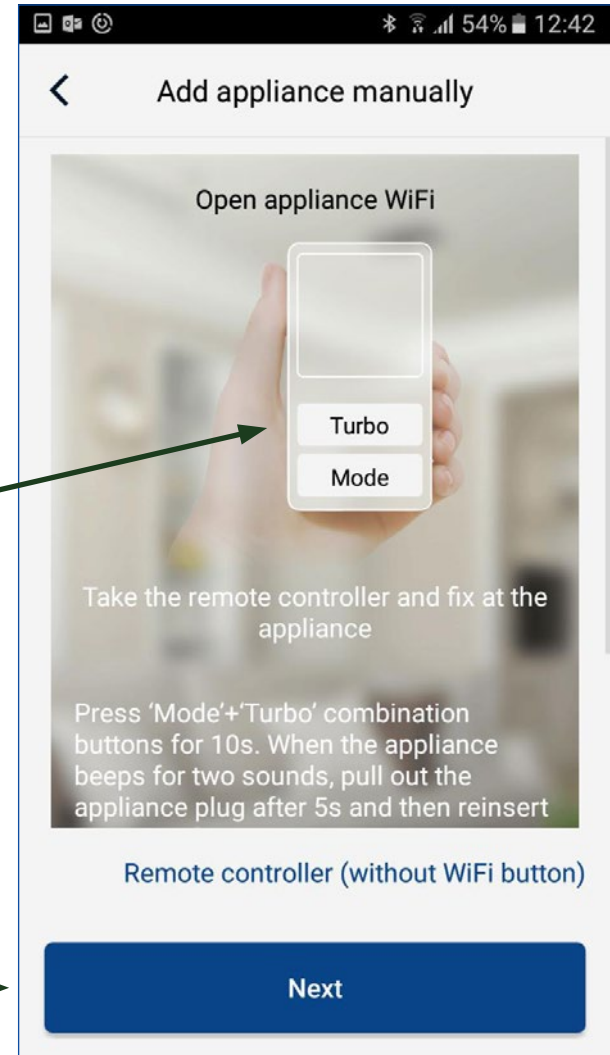
Press  
Turbo and Mode buttons for 10 sec  
Simultaneously

2

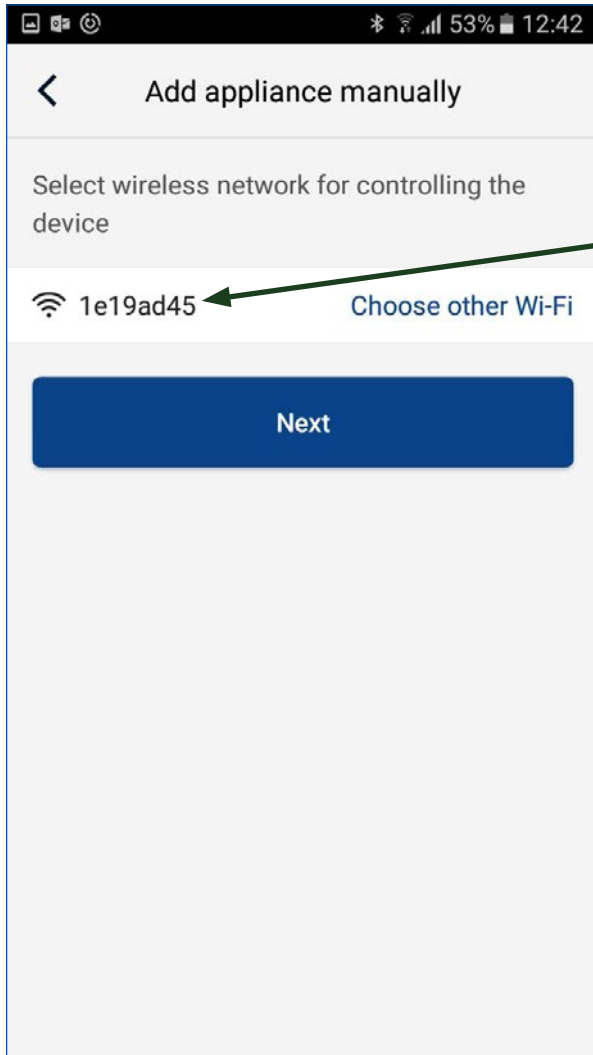
After 5 sec turn Off from power  
supply (double pole switch)  
& Turn On from after 3 sec

3

Click Next



# ADD APPLIANCE MANUALLY



**For Android Devices**  
(find iOS steps in next pages)

**Wifi MAC address will appear after few sec from Reset of Power Supply (Please wait until it shows)**

**Click Next**



# ADD APPLIANCE MANUALLY

12:42 53%

< Add appliance manually

Please select your home wireless router(5GHz Wi-Fi is not supported)

BTMain Choose other Wi-Fi

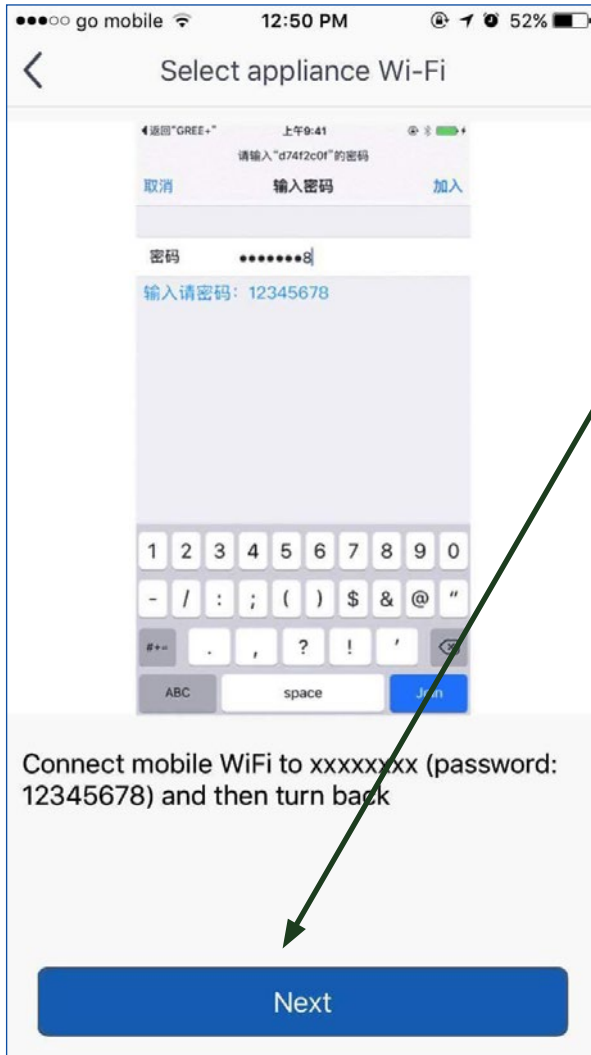
Memorize the password

Submit

**Choose Home Wifi or other Wifi Networks and Input Password**  
**Note: Make sure you stay connected to the same Wifi Network until configuration is complete**

**Click Next**

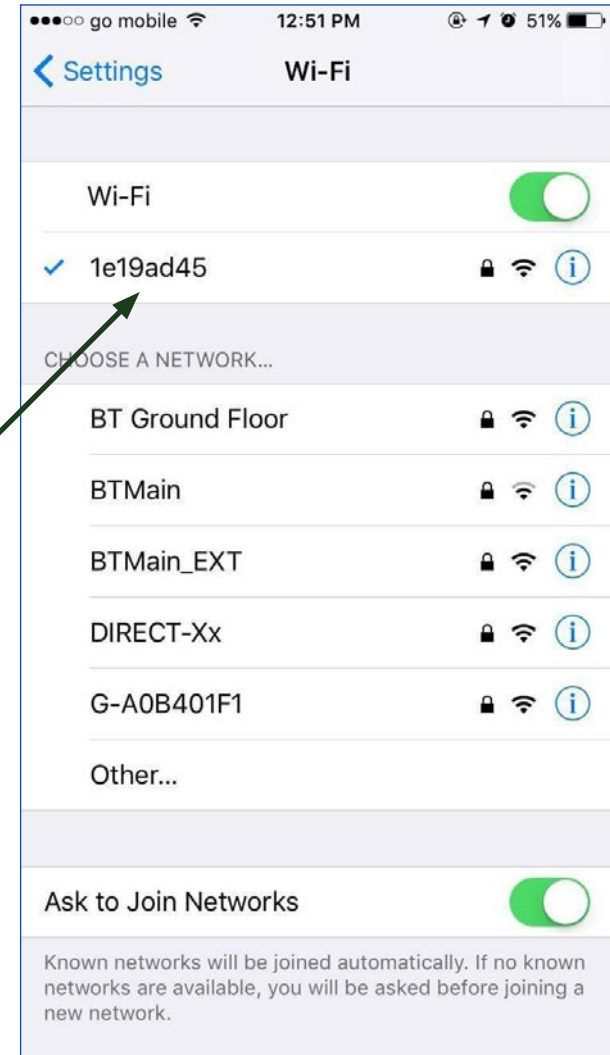
# ADD APPLIANCE MANUALLY



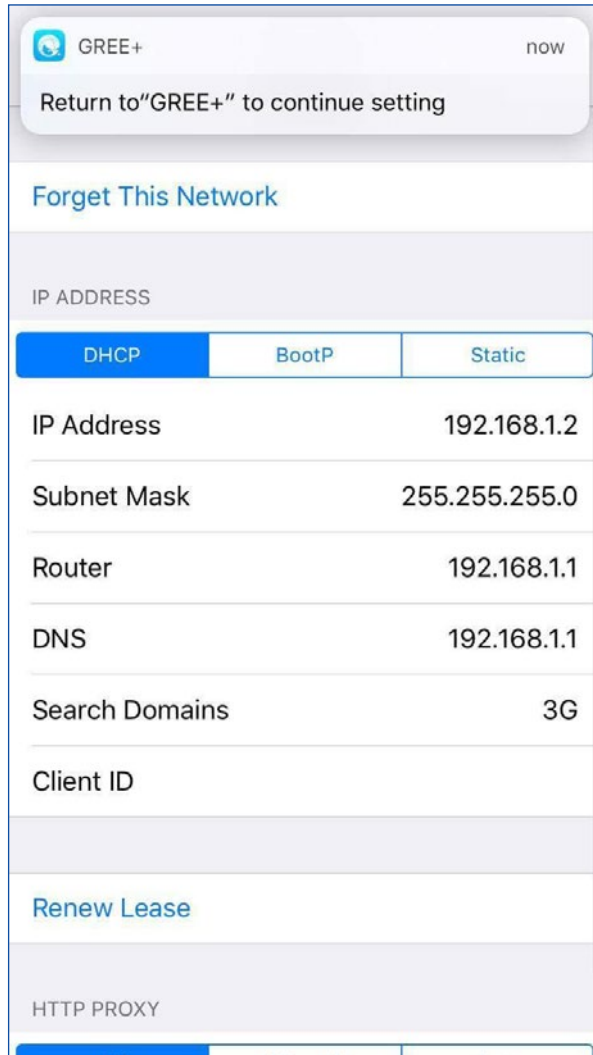
For iOS Devices

1  
Click Next

2  
Click on the Wifi Module  
MAC Address of Appliance  
i.e. 1e19ad45  
And input password default  
12345678

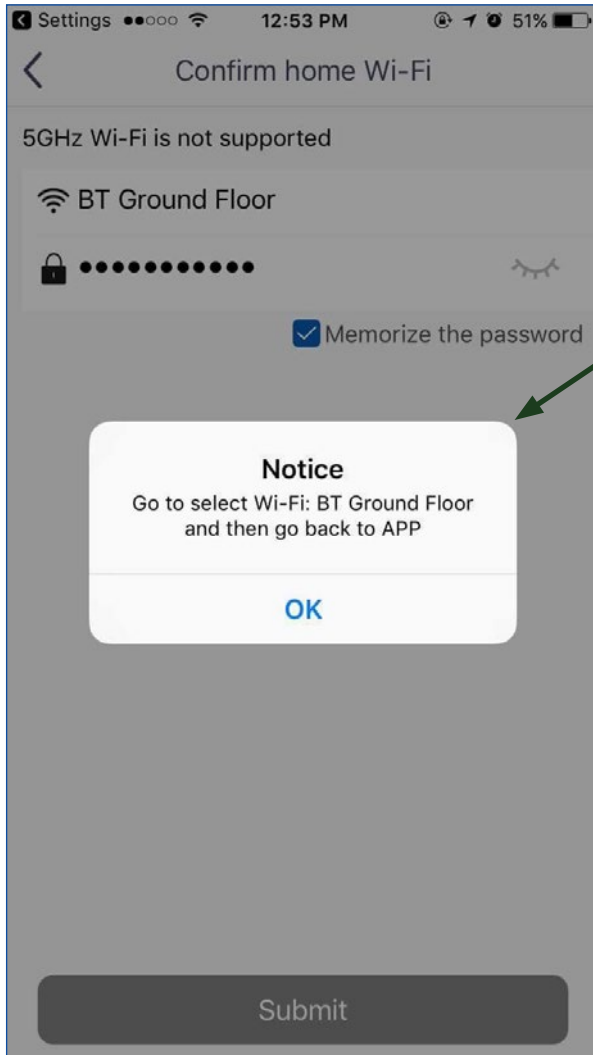


# ADD APPLIANCE MANUALLY

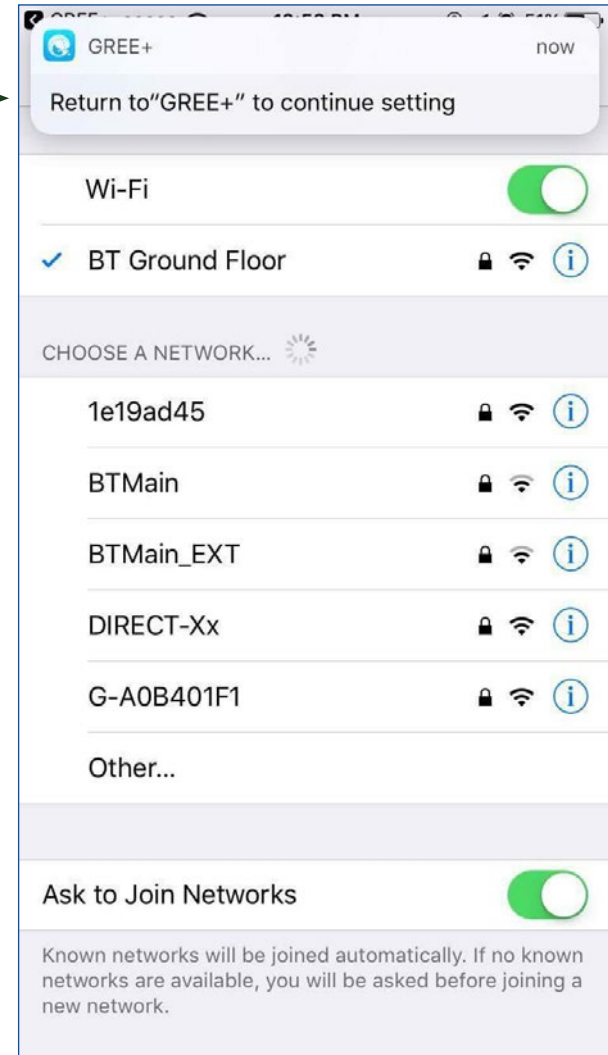


When window pops up please click this tab to Return to App configuration

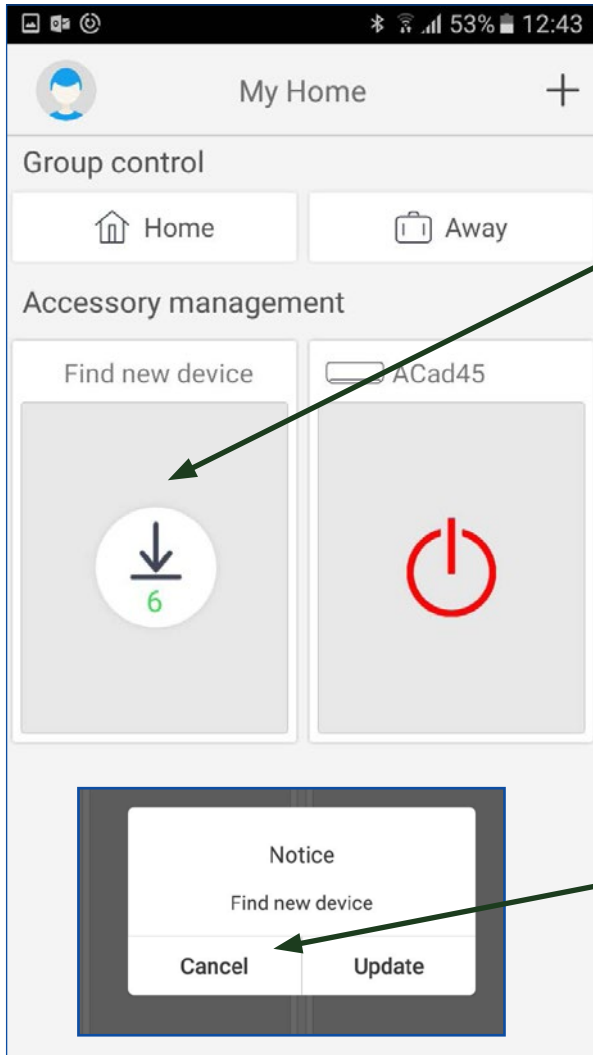
# ADD APPLIANCE MANUALLY



Next Step is to Select Home Wifi or any Network Connection. Input Password and return to App GREE+



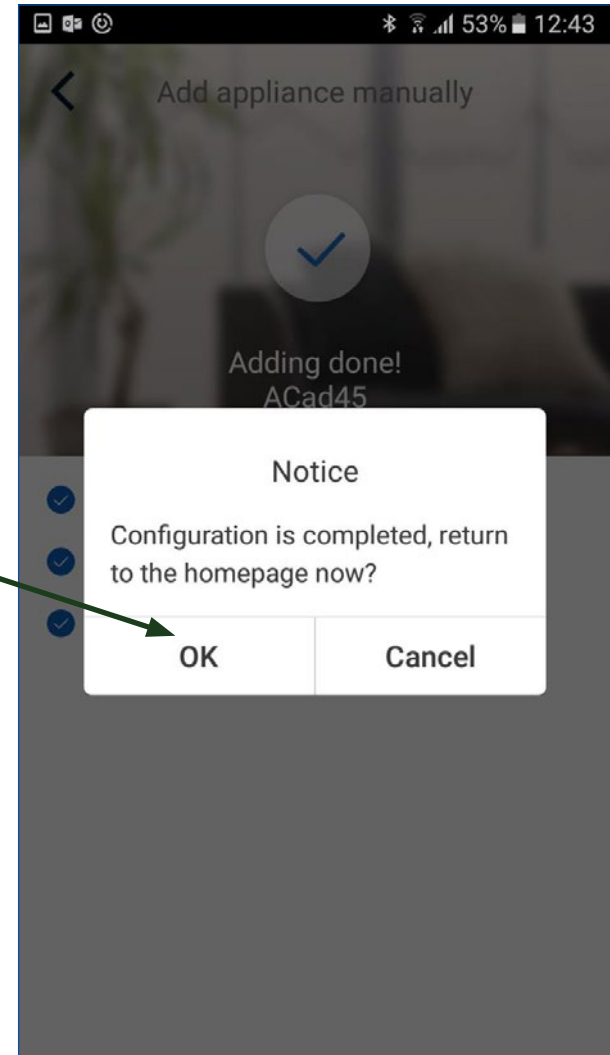
# ADD APPLIANCE MANUALLY



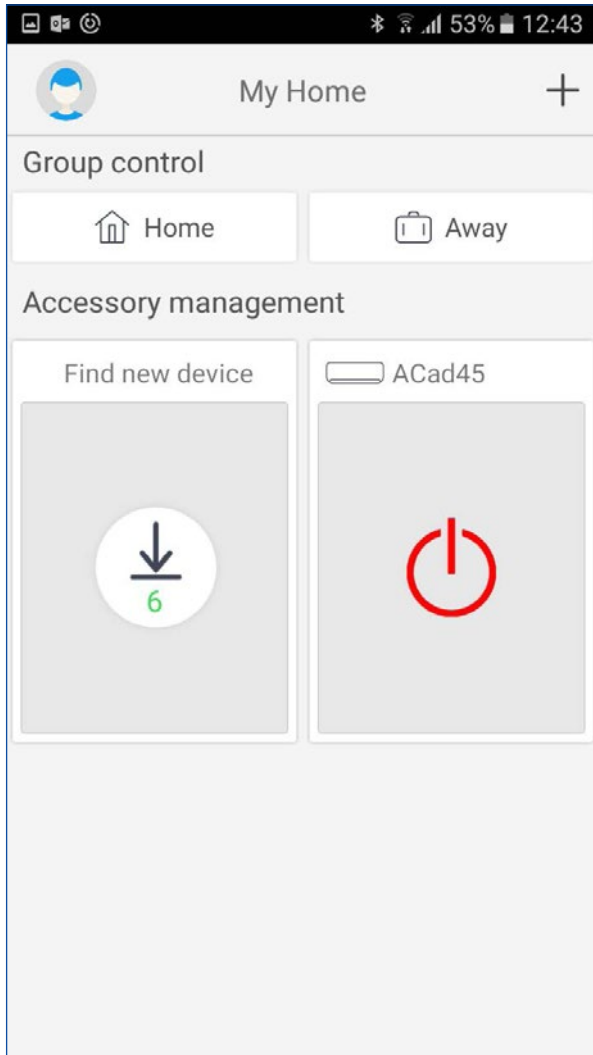
1  
App will search for Appliance

2  
Click OK to start App

If window pops up click on Cancel



# ADD APPLIANCE MANUALLY



**You can now easily control  
Settings of A/C with GREE+ App  
while Indoors or Outdoors**

**Note: To access appliance settings  
from Outdoors, please make sure to  
connect to a reliable Wifi Network or  
3G/4G Network & Sign In with User  
Name & Password in Gree Cloud**

